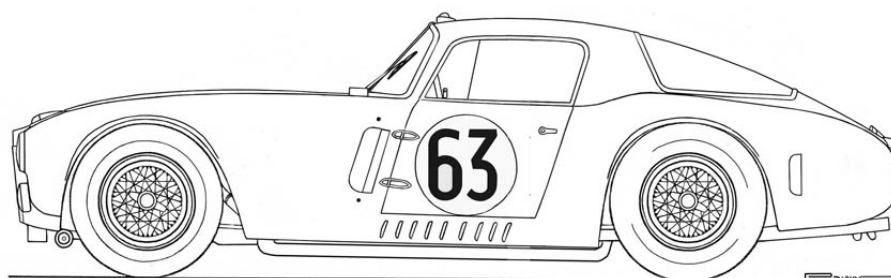


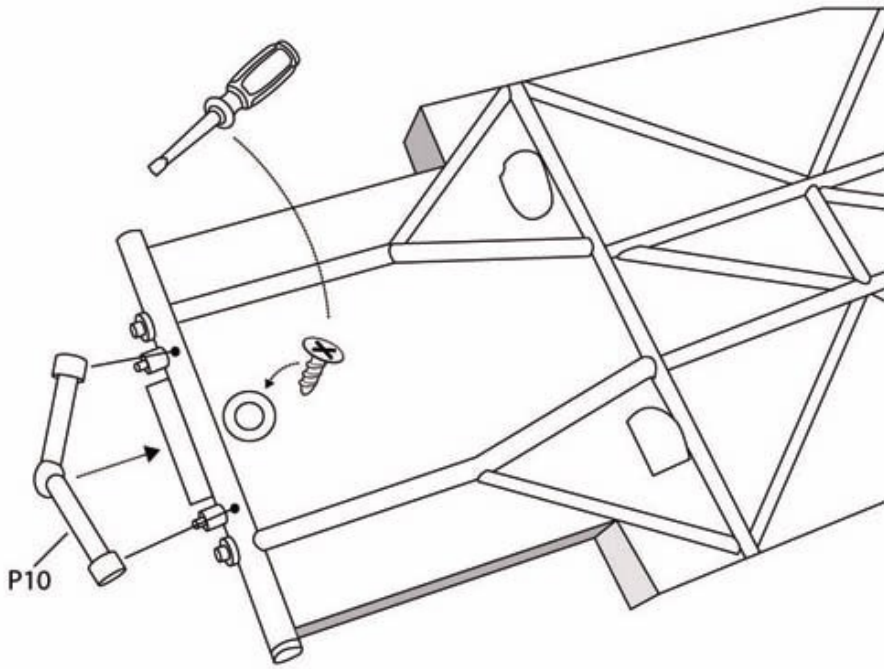
Lancia D20 Le Mans 1953 Targa Florio 1953

Ref. P24104

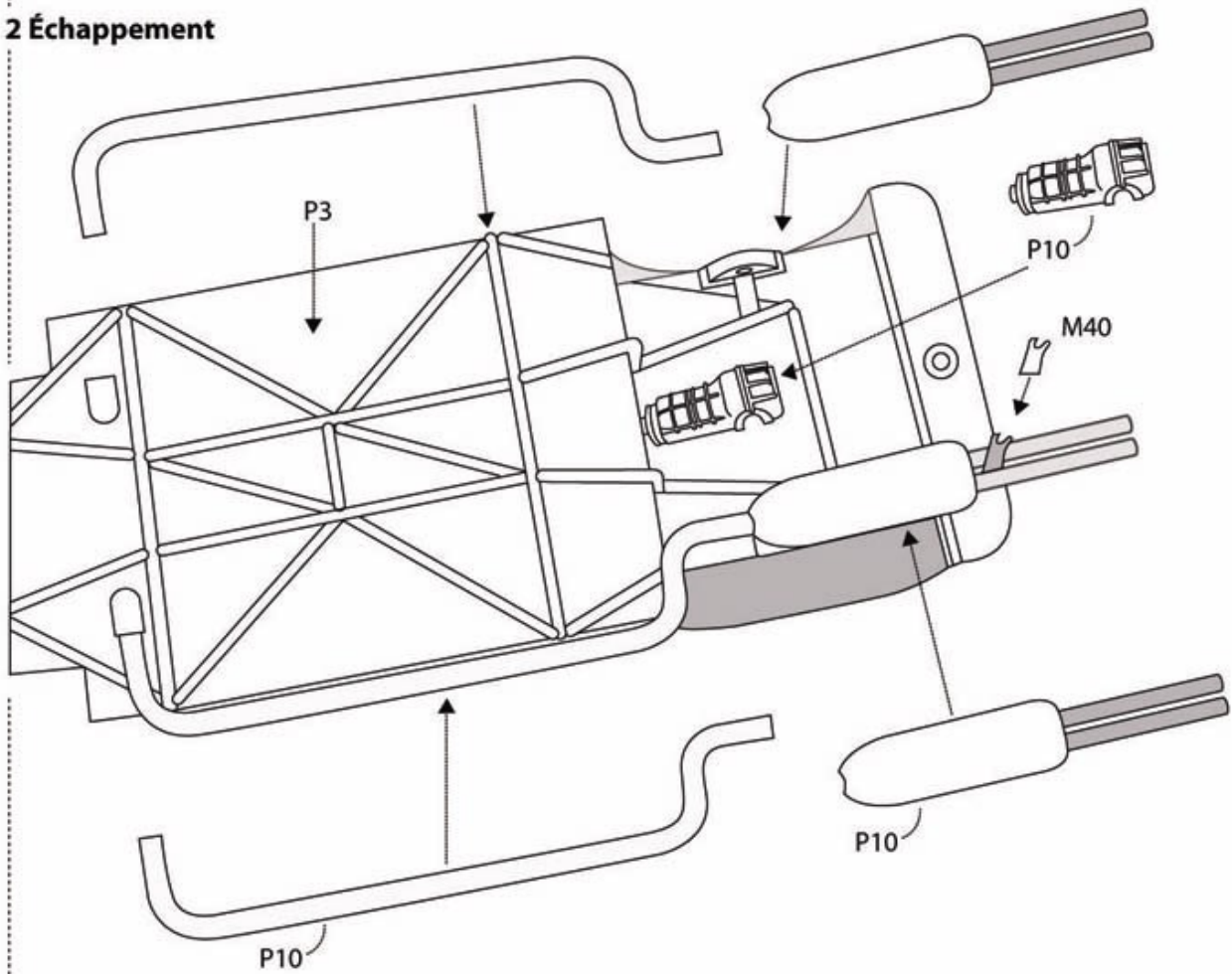


Photodécoupe / Photoetched Part : **M**
Couleur / Color Paint : **P**

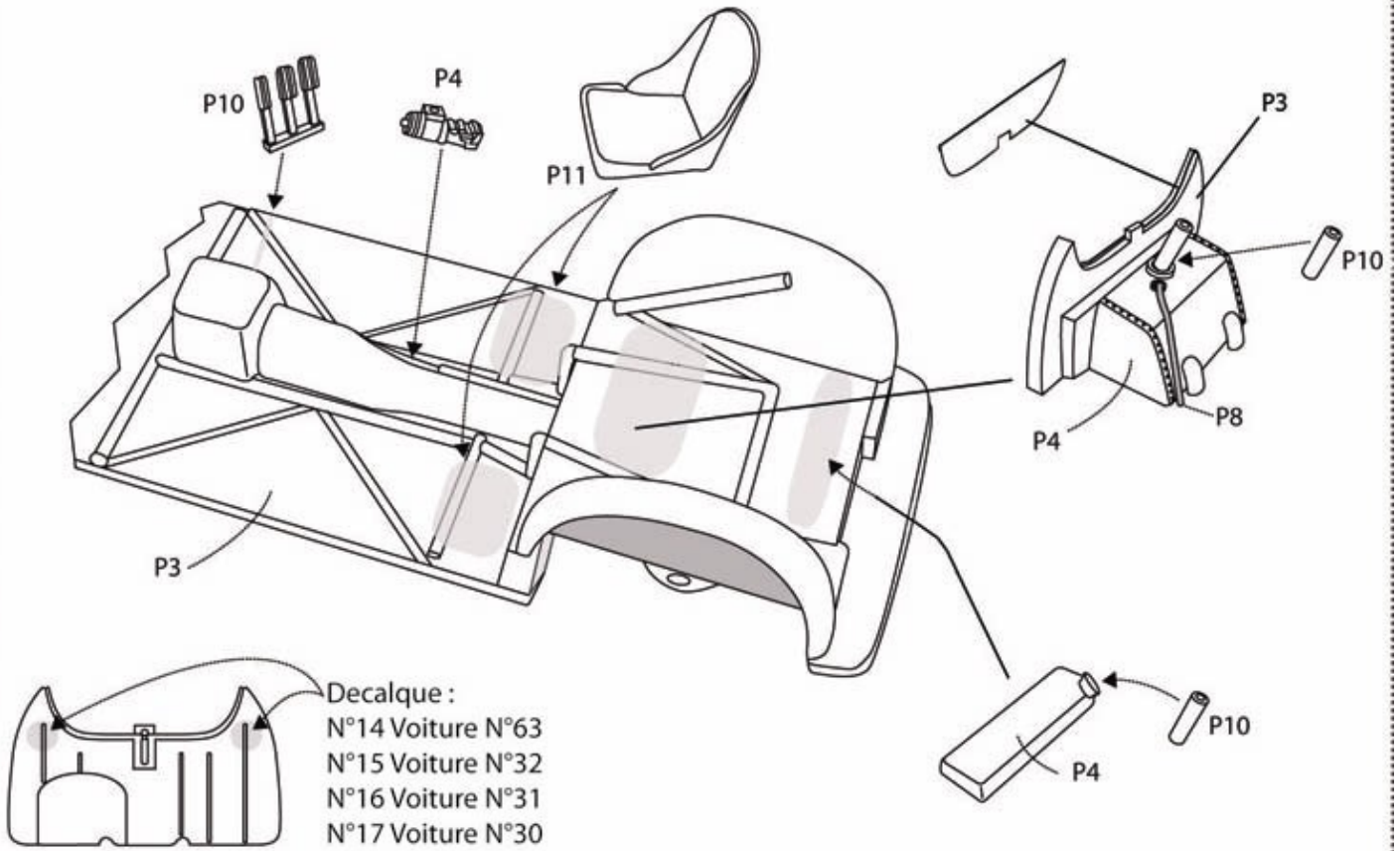
1 Bas de caisse



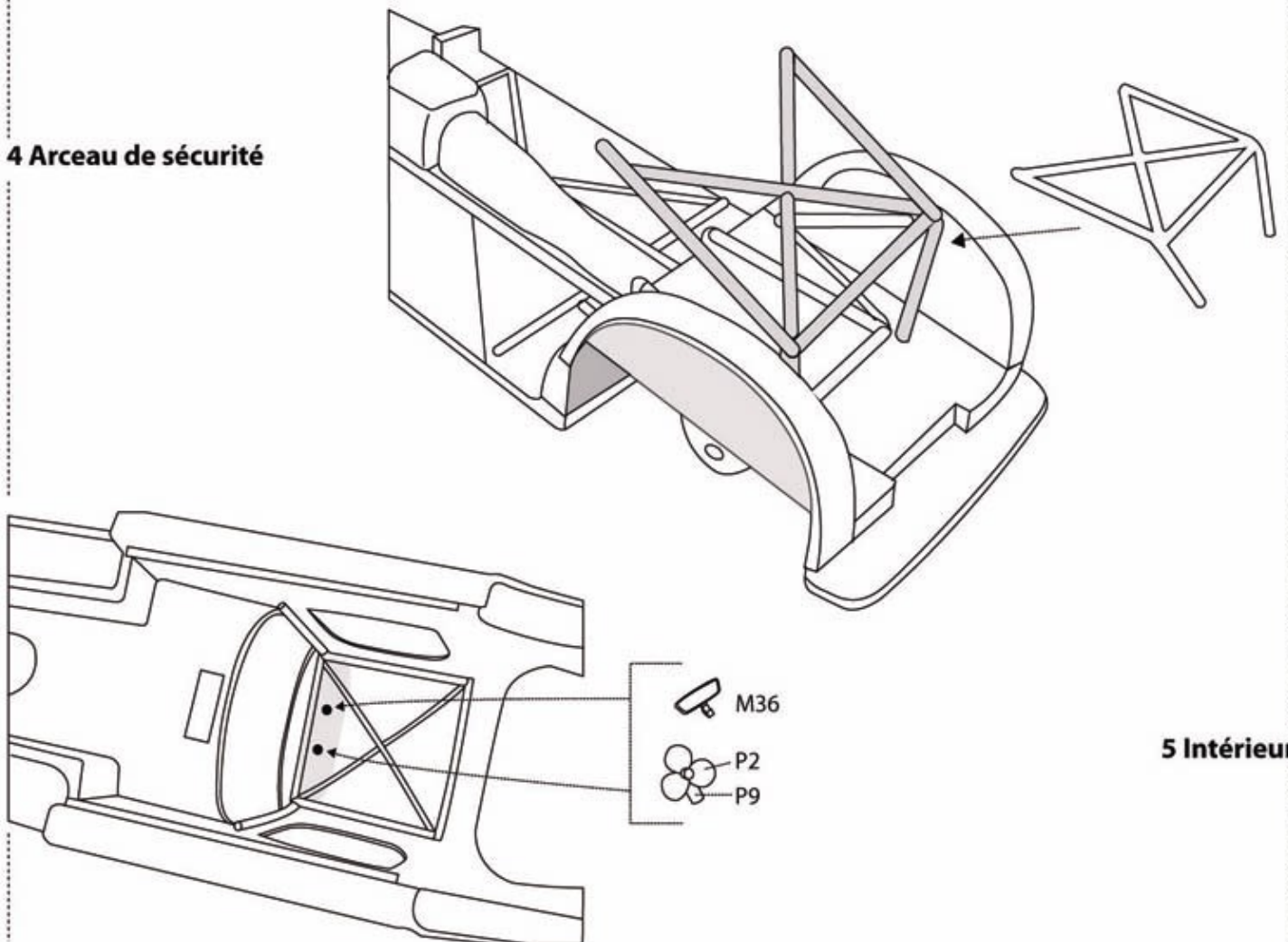
2 Échappement



3 Bas de caisse



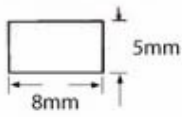
4 Arceau de sécurité



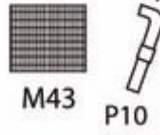
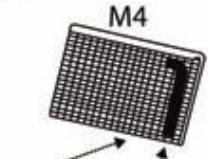
5 Intérieur

6 Carrosserie

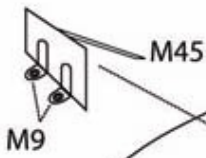
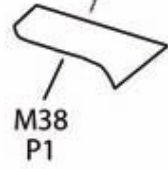
Gabarit / Pattern



P2 N°30
P7 N°31
P6 N°32
P5 N°63



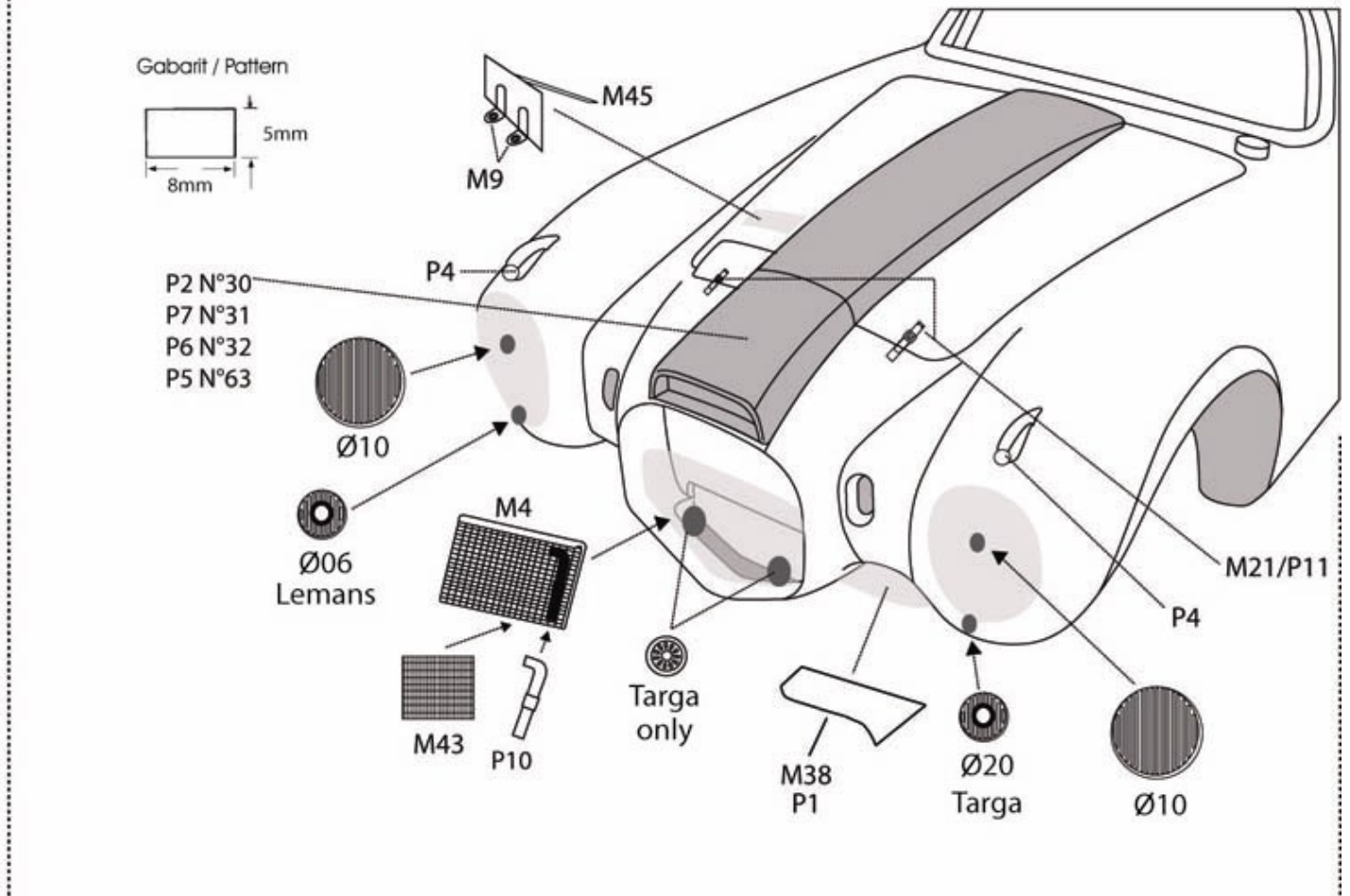
Targa
only



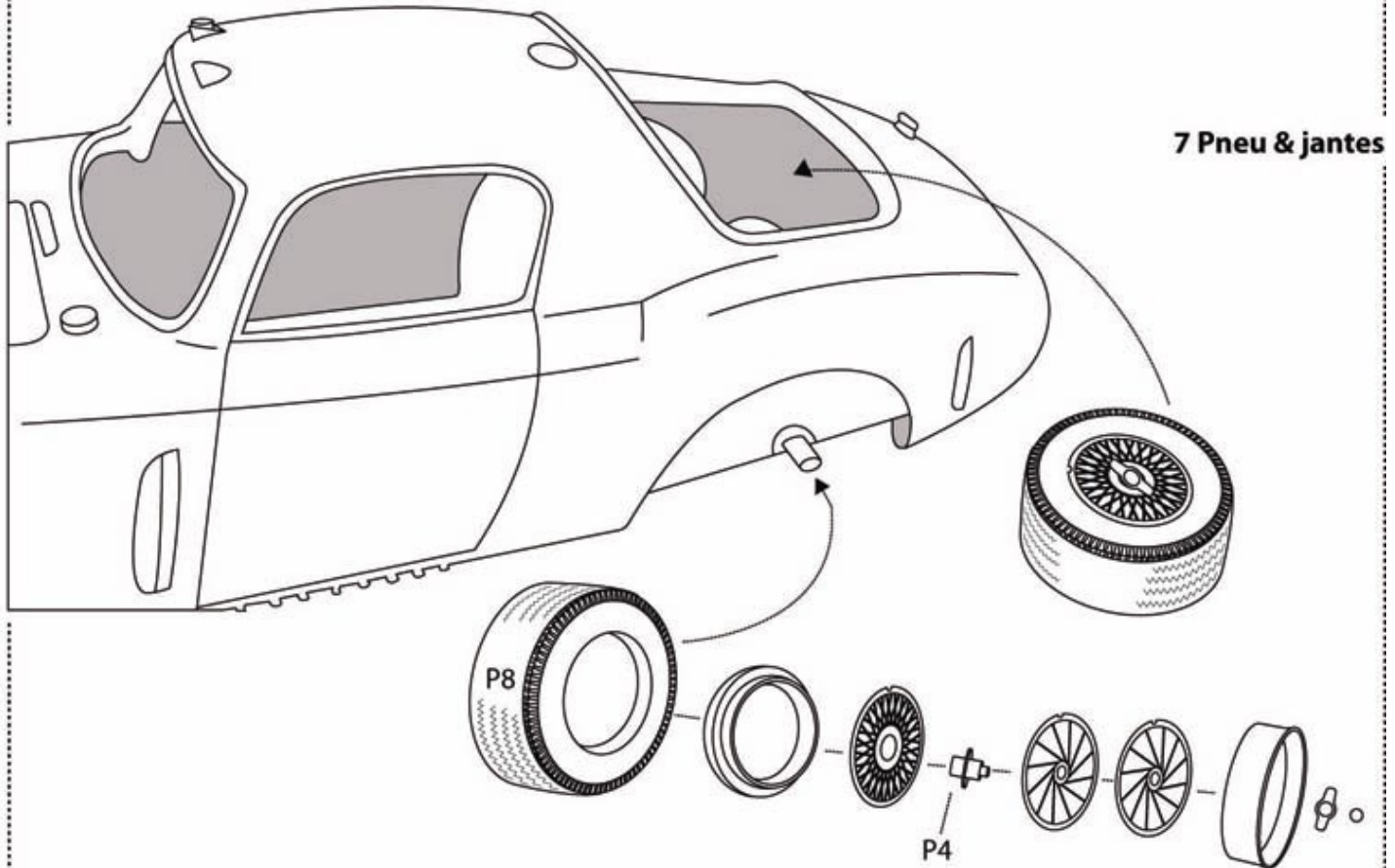
P4

M21/P11

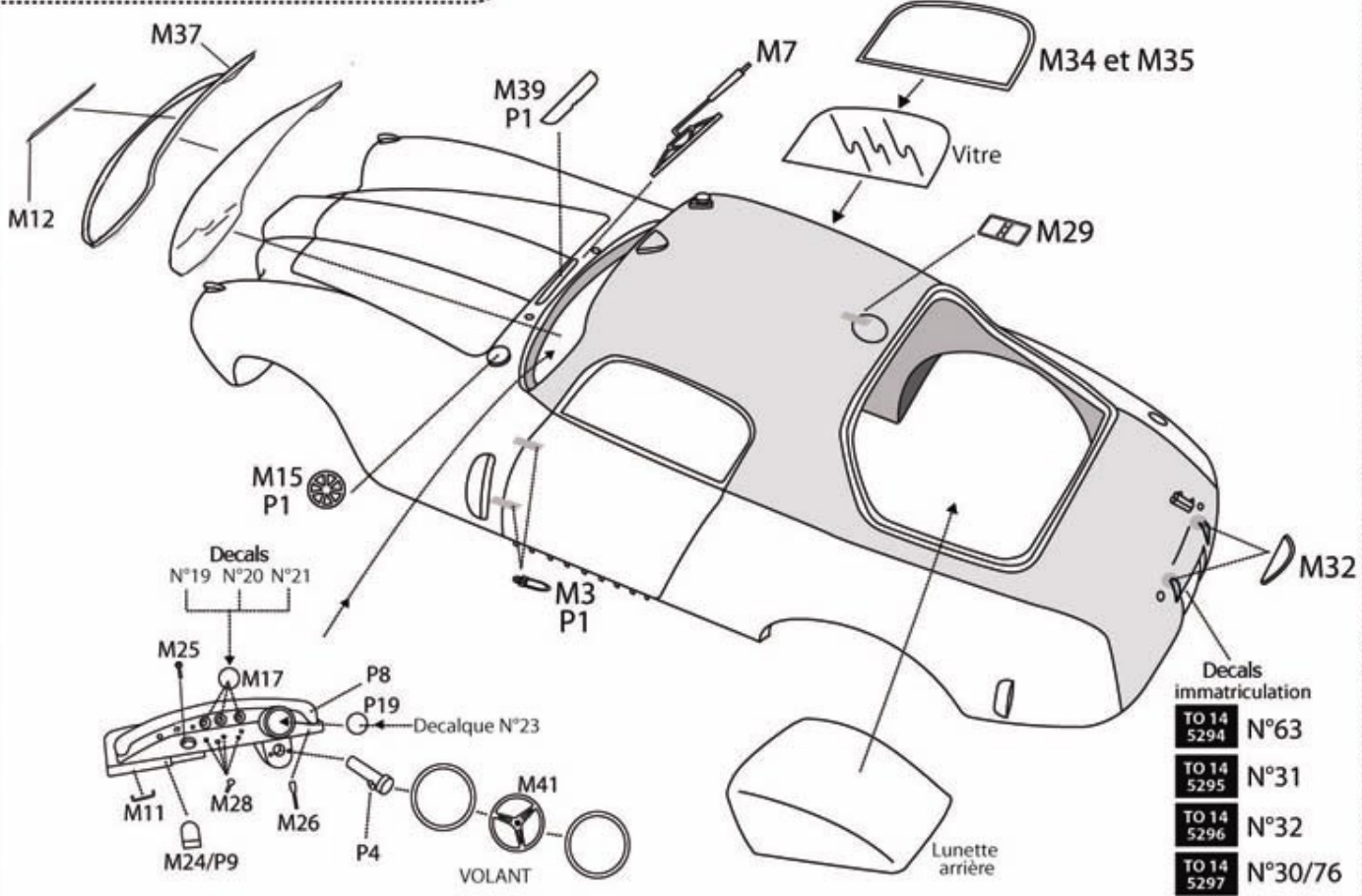
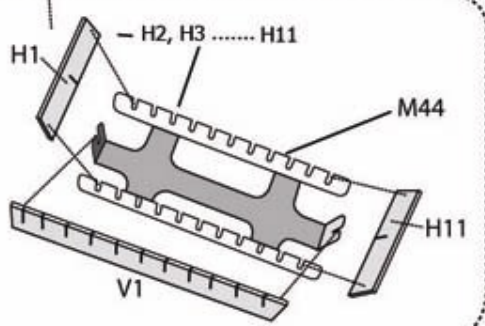
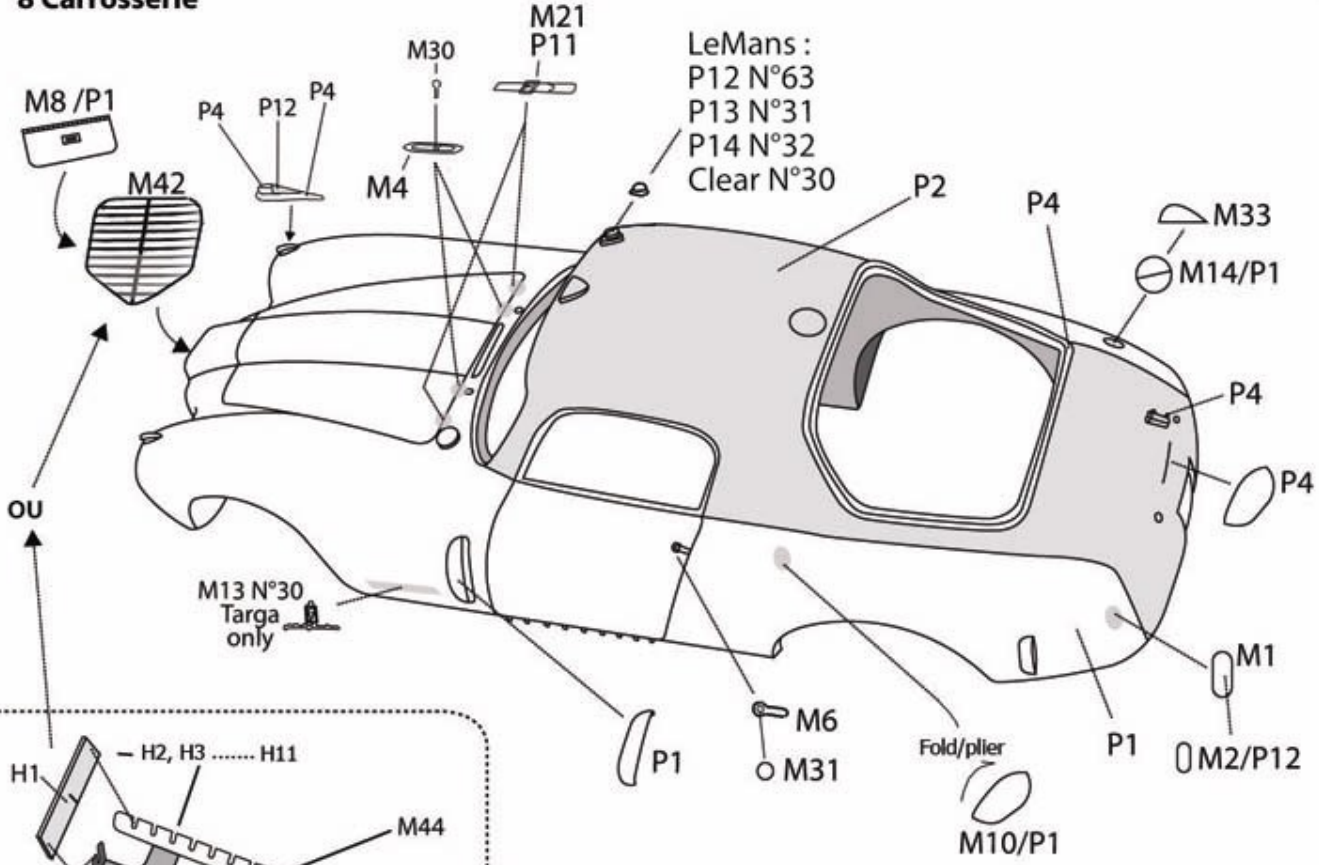
P4



7 Pneu & jantes

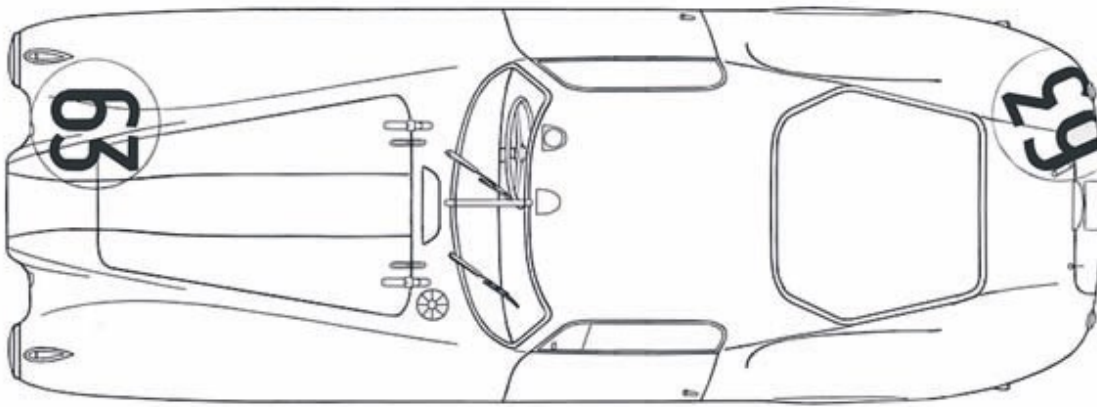


8 Carrosserie

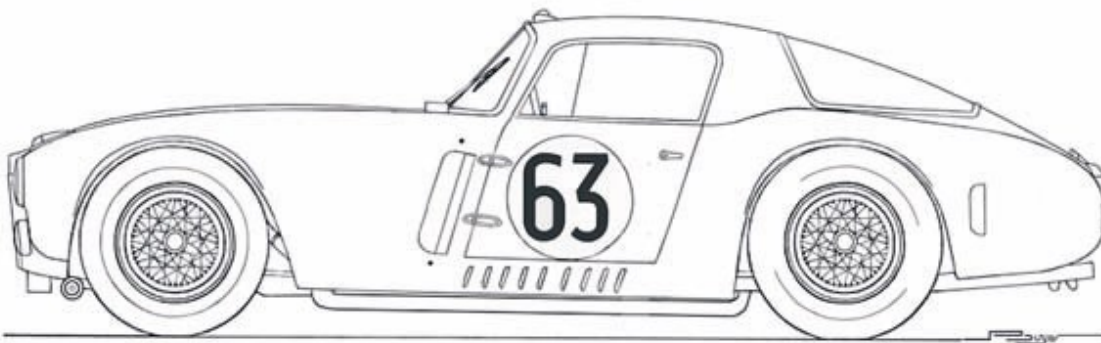


Decals immatriculation	
TO 14 5294	N°63
TO 14 5295	N°31
TO 14 5296	N°32
TO 14 5297	N°30/76

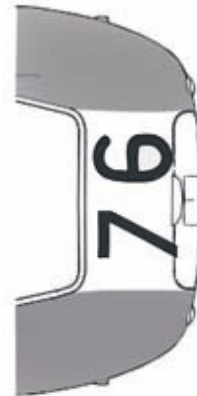
Le Mans



- TO 14 5294 N°63
- TO 14 5295 N°31
- TO 14 5296 N°32
- TO 14 5297 N°30



Targa Florio

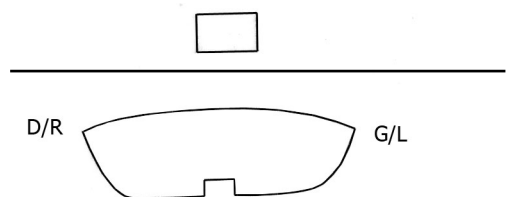


- TO 14 5297 N°76

- P1 Bleu marine / Dark Blue
- P2 Beige / Tan
- P3 Gris clair / Light grey
- P4 Argent / Silver
- P5 Rouge / Red
- P6 Vert / Green
- P7 Jaune / Yellow
- P8 Noir mat / Flat black
- P9 Noir satiné / Satin black
- P10 Acier / Steel
- P11 Marron moyen / Middle brown
- P12 Rouge transparent / Clear red
- P13 Jaune transparent / Clear yellow
- P14 Vert transparent / Clear green

Gabarits/Pattern

Capot moteur/engine hood



Cockpit (arrière/back)